

India's  
Best Energy Efficient  
LED Lights



UNCONDITIONAL WARRANTY  
**5** Years  
LUMEN GUARANTEE



### Features:

- ◆ Design your room as virtual sky.
- ◆ Luxurious way of accessing the light.
- ◆ Can be dimmed from 0% to 100% or 100% to 0% illumination smoothly.
- ◆ Selected area of the room can be illuminated.
- ◆ Selected area of the room can be dimmed or illuminated.
- ◆ Glare free.
- ◆ Accessibility based on one's requirement.
- ◆ Can be accessed from remote locations.
- ◆ Different themes are available, which can be accessed as per the requirement based on one's comfort.
- ◆ Possibility of integrating solar energy in LED lights, if required.
- ◆ Slab fixing models are also available in all LED Lights.

### Specifications:

- ◆ Specifications as per requirement specified.

### Applications:

- ◆ Offices
- ◆ Industries
- ◆ Hotels
- ◆ Banks

### Special Features :

- ◆ Mobile App driven – Access at your finger tip through your Mobile.



India's  
Best Energy Efficient  
LED Lights

**Features:**

- ◆ Designed with 30 years of R&D Experience in LED applications.
- ◆ Consumes around 50% of the power as compared to CFL lights for same lumen output.
- ◆ Glare free, uniform illumination with longer life and less maintenance.
- ◆ Designed to operate in Indian environmental conditions with temperature raise below 15°C, ensuring stable light output without depreciation.
- ◆ Immune to input AC line fluctuations and surges.
- ◆ Optics and diffusers are UV stabilized, preventing change in color with time.

UNCONDITIONAL WARRANTY  
**5** Years  
LUMEN GUARANTEE

## Round 6" & 7" LED Troffer Light



Ceiling / Grid Fixing	Product Code	AC/DC Wattage	Lumen	Colour	Dimensions(mm) (L X W X H)
ITF / ITG	ITF6RAC006WW	6W/7W	630	Warm White	180 X 27
ITF / ITG	ITF6RAC006NW	6W/7W	630	Neutral White	
ITF / ITG	ITF6RAC006CW	6W/7W	700	Cool White	
ITF / ITG	ITF6RAC006DW	6W/7W	700	Day White	
ITF / ITG	ITF7RAC010WW	10W/12W	1075	Warm White	215 X 30
ITF / ITG	ITF7RAC010NW	10W/12W	1075	Neutral White	
ITF / ITG	ITF7RAC010CW	10W/12W	1225	Cool White	
ITF / ITG	ITF7RAC010DW	10W/12W	1225	Day White	



## 0.5' X 0.5' LED Troffer Light



Ceiling / Grid Fixing	Product Code	AC/DC Wattage	Lumen	Colour	Dimensions(mm) (L X W X H)
ITF / ITG	ITFHHAC006WW	6W/7W	630	Warm White	185 X 185 X 34
ITF / ITG	ITFHHAC006NW	6W/7W	630	Neutral White	
ITF / ITG	ITFHHAC006CW	6W/7W	700	Cool White	
ITF / ITG	ITFHHAC006DW	6W/7W	700	Day White	



## 0.75' X 0.75' LED Troffer Light



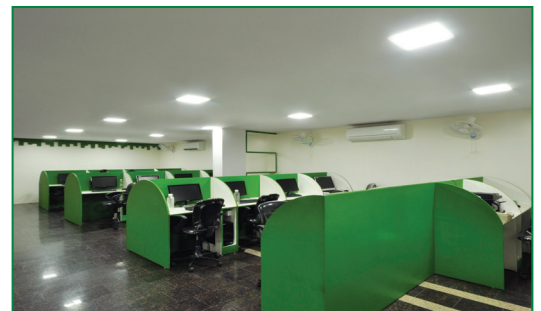
Ceiling / Grid Fixing	Product Code	AC/DC Wattage	Lumen	Colour	Dimensions(mm) (L X W X H)
ITF / ITG	ITF9SAC010DW	10W/11W	1150	Day White	223 X 223 X 47
ITF / ITG	ITF9SAC014DW	14W/16W	1750	Day White	



## 1' X 1' LED Troffer Light



Ceiling / Grid Fixing	Product Code	AC/DC Wattage	Lumen	Colour	Dimensions(mm) (L X W X H)
ITF / ITG	ITF11AC010DW	10W/12W	1025	Day White	310 X 310 X 37
ITF / ITG	ITF11AC016WW	16W/19W	1900	Warm White	
ITF / ITG	ITF11AC016NW	16W/19W	1900	Neutral White	
ITF / ITG	ITF11AC016CW	16W/19W	2000	Cool White	
ITF / ITG	ITF11AC016DW	16W/19W	2000	Day White	
ITF / ITG	ITF11AC025WW	25W/30W	2750	Warm White	
ITF / ITG	ITF11AC025NW	25W/30W	2750	Neutral White	
ITF / ITG	ITF11AC025CW	25W/30W	3000	Cool White	
ITF / ITG	ITF11AC025DW	25W/30W	3000	Day White	



## 2' X 2' LED Troffer Light

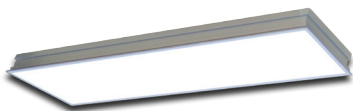


Ceiling / Grid Fixing	Product Code	AC/DC Wattage	Lumen	Colour	Dimensions(mm) (L X W X H)
ITF / ITG	ITF22AC027DW	27W/32W	2850	Day White	626 X 626 X 88
ITF / ITG	ITF22AC037DW	37W/44W	3700	Day White	
ITF / ITG	ITF22AC065DW	65W/75W	8800	Day White	
ITF / ITG	ITF22AC100DW	100W/117W	13000	Day White	

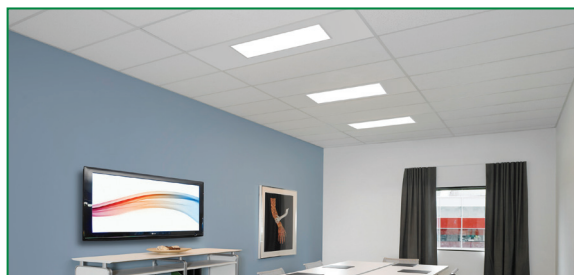




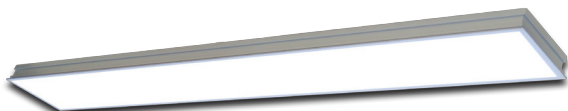
## 0.5' X 2' LED Troffer Light



Product Code	AC/DC Wattage	Lumen	Colour	Dimensions(mm) (L X W X H)
ITFH2AC020DW	20W / 23W	2500	Day White	609 X 169 X 45



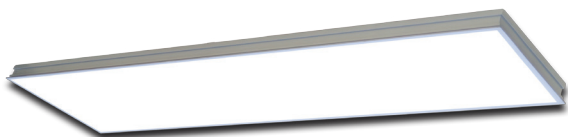
## 0.5' X 4' LED Troffer Light



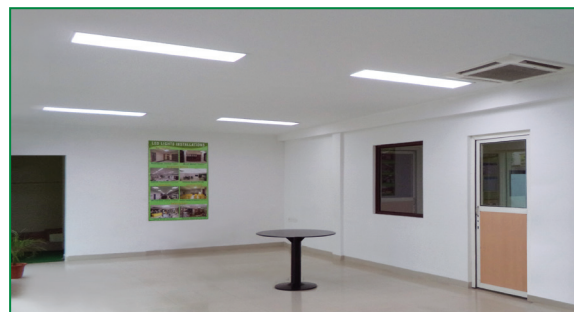
Product Code	AC/DC Wattage	Lumen	Colour	Dimensions(mm) (L X W X H)
ITFH4AC040DW	40W / 46W	5000	Day White	1243 X 193 X 45
ITGH4AC040DW	40W / 46W	5000	Day White	1212 X 162 X 43



## 1' X 4' LED Troffer Light



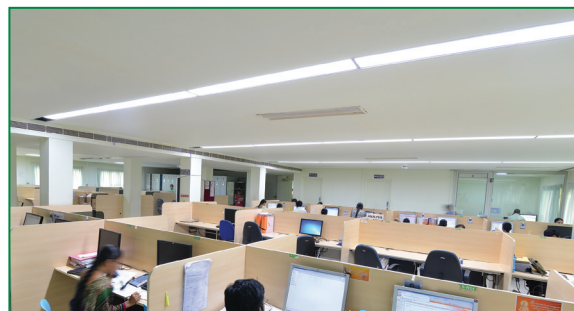
Product Code	AC/DC Wattage	Lumen	Colour	Dimensions(mm) (L X W X H)
ITF14AC040DW	40W / 48W	4600	Day White	1225 X 325 X 45
ITG14AC040DW	40W / 46W	4600	Day White	1196 X 295 X 43



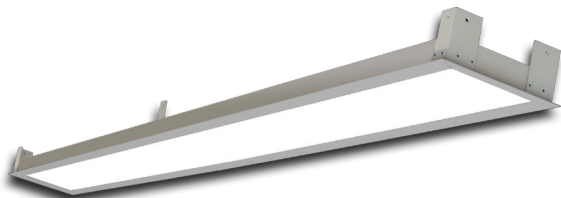
## 0.5' X 5' LED Troffer - Joint Expansion



Product Code	AC/DC Wattage	Lumen	Colour	Dimensions(mm) (L X W X H)
ITFH5AC022DW	22W / 26W	2400	Day White	1520 X 170 X 40



## Linea Series LED Troffer Light



Size (Ft)	Product Code	AC/DC Wattage	Lumen	Colour	Dimensions(mm) (L X W X H)
0.6' X 4'	ITFH4AC018DW	18W/21W	1900	Day White	1841 X 166 X 72
0.6' X 6'	ITFH6AC027DW	27W / 31W	2850	Day White	2300 X 166 X 72
0.6' X 7.5'	ITFH75AC034DW	34W / 39W	3500	Day White	2400 X 166 X 72
0.6' X 7.8'	ITFH78AC036DW	36W / 41W	3850	Day White	2441 X 166 X 72
0.6' X 8'	ITFH8AC036DW	36W / 41W	3850	Day White	3041 X 166 X 72
0.6' X 10'	ITFH10AC045DW	45W / 53W	4900	Day White	2441 X 166 X 72
0.6' X 18'	ITFH18AC081DW	81W / 95W	8500	Day White	3040 X 166 X 72
1' X 20'	ITF120AC200DW	200W / 235W	21150	Day White	3062 X 325 X 45



\* The specifications are subjected to change. Before finalizing the product, please contact us.

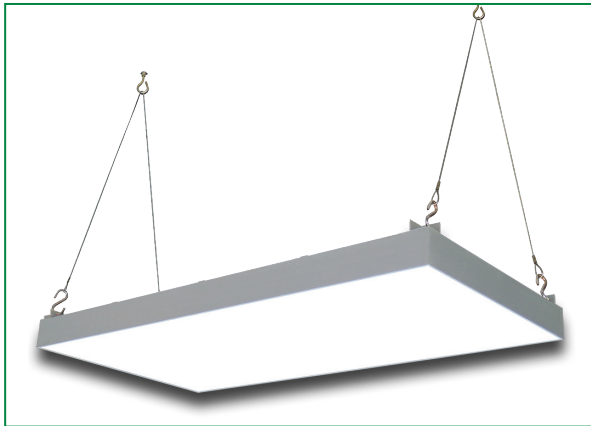
## Slab Fixing Models



Size (Ft)	Product Code	AC/DC Wattage	Lumens	Color	Dimensions(mm) LXHXW
0.5'X0.5'	ITSHHAC006DW (EXT)	6W/7W	700	Day White	196 X 175 X 43
	ITSHHAC006DW (INT)	6W/7W	700	Day White	225 X 175 X 43
1' X 1'	ITS11AC010DW (EXT)	10W/12W	1000	Day White	323 X 302 X 43
	ITS11AC016DW (EXT)	16W/19W	2000	Day White	
	ITS11AC025DW (EXT)	25W/30W	3000	Day White	
1' X 1'	ITS11AC010DW (INT)	10W/12W	1000	Day White	371 X 302 X 43
	ITS11AC016DW (INT)	16W/19W	2000	Day White	
	ITS11AC025DW (INT)	25W/30W	3000	Day White	
2' X 2'	ITS22AC037DW	37W/43W	4300	Day White	672 X 601 X 103
	ITS22AC065DW	65W/75W	9100	Day White	
	ITS22AC100DW	100W/117W	13500	Day White	

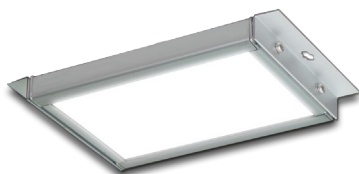


## Suspended / Hanging Models



Size (Ft)	Product Code	AC/DC Wattage	Lumen	Colour	Dimensions(mm) (L X W X H)
0.25' X 2'	ITHGQ2AC016DW	16W / 19W	2200	Day Light	530 X 98 X 62
0.25' X 4'	ITHGQ4AC012DW	12W / 14W	1750	Day Light	1230 X 98 X 62
0.25' X 4'	ITHGQ4AC032DW	32W / 38W	4600	Day Light	1030 X 98 X 62
0.5' X 0.5'	ITHGHHAC006DW	6W / 7W	700	Day Light	225 X 175 X 43
0.5' X 1'	ITHGH1AC010DW	10W / 12W	1200	Day Light	365 X 170 X 43
0.5' X 2'	ITHGH2AC020DW	20W / 24W	2400	Day Light	675 X 169 X 43
0.5' X 4'	ITHGH4AC040DW	40W / 46W	5000	Day Light	1310 X 169 X 43
1' X 1'	ITHG11AC010DW	10W / 12W	1000	Day Light	371 X 302 X 43
	ITHG11AC016DW	16W / 19W	2000	Day Light	
	ITHG11AC025DW	25W / 30W	3000	Day Light	
2' x 2'	ITHG22AC037DW	37W / 43W	4300	Day Light	672 X 601 X 103
	ITHG22AC065DW	65W / 75W	9100	Day Light	
	ITHG22AC100DW	100W / 117W	13500	Day Light	
2' x 4'	ITHG24DC075DW	75W / 85W	6200	Day Light	1212 X 608 X 102

## 5W Parking Lamp



Product Code	AC/DC Wattage	Lumen	Colour	Dimensions(mm) (L X W X H)
IPSQHDC005DW	5W	630	Day White	135 X 101 X 15




\* The specifications are subjected to change. Before finalizing the product, please contact us.




## Wall Mounted


0.5' X 1'



0.5' X 2'



0.5' X 4'



Size (Ft)	Product Code	AC/DC Wattage	Lumen	Colour	Dimensions(mm) (L X W X H)
0.5' X 1'	ITWH1AC010DW	10W / 12W	1200	Day White	366 X 169 X 121
0.5' X 2'	ITWH2AC020DW	20W / 24W	2400	Day White	651 X 169 X 121
0.5' X 4'	ITWH4AC040DW	40W / 46W	5000	Day White	1287 X 169 X 121



## Cove Lighting

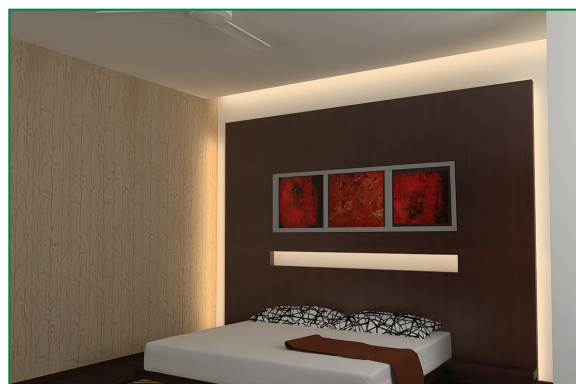
2' 6W



4' 12W



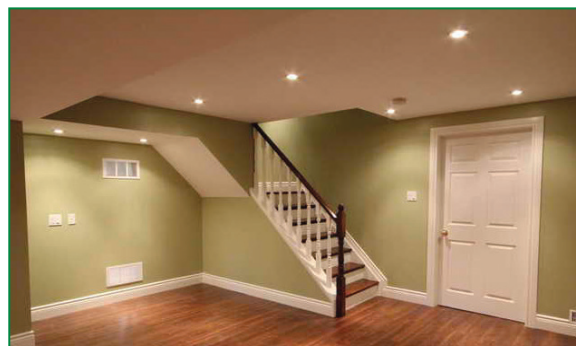
Size (Ft)	Product Code	AC/DC Wattage	Lumen	Colour	Dimensions(mm) (L X W X H)
2'	IDC2FAC006DW	6W / 7.5W	750	Day White	602 X 38 X 30
4'	IDC4FAC012DW	12W / 14W	1600	Day White	1202 X 38 X 30



## Spot Light (1W)



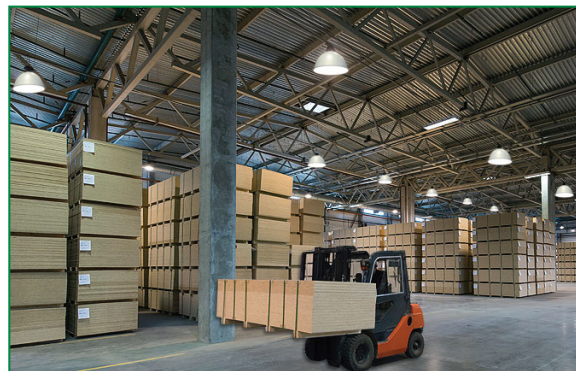
Product Code	AC/DC Wattage	Lumen	Colour
IDF1RAC001DW	4.3W / 3.3W	100	Day White



## High-Bay Light

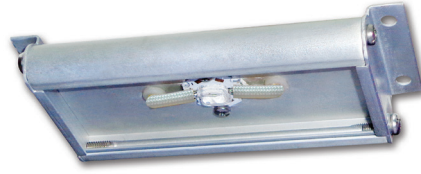


Product Code	AC/DC Wattage	Lumen	Colour	Dimensions(mm) (L X W X H)
IHS18RAC032DW	32W / 38W	3700	Day White	460 X 280



\* The specifications are subjected to change. Before finalizing the product, please contact us.

India's  
Best Energy Efficient  
LED Lights

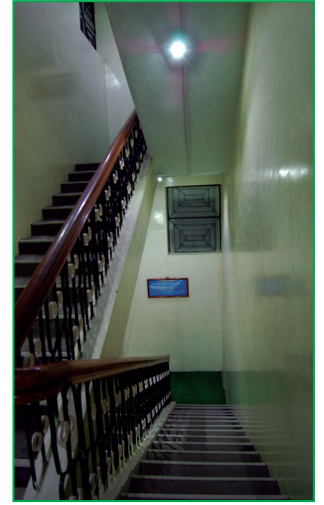


## LED Corridor Light

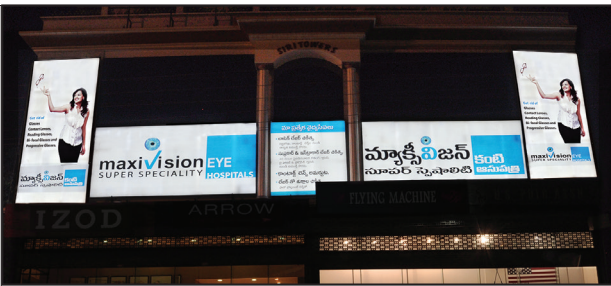
Energy efficient lighting specifically for Pathways & Corridors.

### Specifications:

- Input power** : Single phase 50Hz, 150V - 275V AC (or) 24V DC with battery backup
- Power consumption** : 2W
- Average LUX** : 5 to 15 Lux  
(Ceiling height-8ft, units placed between a distance of 8 to 15ft )
- Lumen output** : 150 Lumens
- Color temperature** : 6000K - 6500K
- Colour rendering index** :  $\geq 75$
- Color** : White
- Operating temperature** : 0 to 60°C



## LED Glow Sign Boards



### Features:

- ♦ Perfectly even, edge to edge illumination for seamless appearance.
- ♦ Long life time and high efficacy.
- ♦ Significant power saving and reduced operational costs.
- ♦ Designed for Indian environmental conditions
- ♦ High efficiency LED's ensure uninterrupted service life.

### Specifications:

- Input Power** : 85V - 275V AC
- No.of LED strips per Sq / Feet** : 3 No's
- Wattage of each LED strip** : 1.2 Watts
- Color Temperature** : 6000K - 6500K
- Colour Rendering Index** :  $> 80$
- Operating Temperature** : 0 to 60°C




\* The specifications are subjected to change. Before finalizing the product, please contact us.



India's  
Best Energy Efficient  
LED Lights




UNCONDITIONAL WARRANTY  
**5** Years  
LUMEN GUARANTEE

LED Street Light 9W	Specifications
	Input Power : Single Phase 50Hz 85V - 275V AC
	AC / DC Wattage : 9W / 12W
	Light output
	With Lens : 1050 Lumens
	Without Lens : 1100 Lumens
	Color temperature : >6000K
	Colour Rendering Index : ≥70
	Operating temperature : 0 to 60°C
	Protection : IP-65
	Product code
With Lens : OSPWLAC009DW	
Without Lens : OSPNLAC009DW	

Solar LED Street Light		
		
Specification	9W Street Light	28W Street Light
Solar Module	45W 12V	80W 12V
Battery	12V 26Ah	24V 26Ah
Input Wattage	9W	28W
Light Output	1250 lm	3600 lm
Color Temperature	6500K	6500K
Display Indication	Health & low battery indication	Health & low battery indication
Back up	42 hrs on rainy (or) cloudy days	42 hrs on rainy (or) cloudy days
Pole Length	4.5 meters from ground level	4.5 meters from ground level
Environment Protection	IP-65	IP-65
Operating Temperature	0°C to 60°C	0°C to 60°C
Dimensions (mm)	380x116 x70 (LxWxH)	380x235 x145 (LxWxH)

LED Street Light 28W	Specifications
	Input Power : Single Phase 50Hz 85V - 275V AC
	AC / DC Wattage : 28W / 33W
	Light output
	With Lens : 3300 Lumens
	Without Lens : 3500 Lumens
	Color temperature : >6000K
	Colour Rendering Index : ≥70
	Operating temperature : 0 to 60°C
	Protection : IP-65
	Product code
With Lens : OSPWLAC028DW	
Without Lens : OSPNLAC028DW	

LED Street Light 65W	Specifications
	Input Power : Single Phase 50Hz 85V - 275V AC
	AC / DC Wattage : 65W / 75W
	Light output
	With Lens : 8500 Lumens
	Without Lens : 9000 Lumens
	Color temperature : >6000K
	Colour Rendering Index : ≥70
	Operating temperature : 0 to 60°C
	Protection : IP-65
	Product code
With Lens : OSPWLAC065CW	
Without Lens : OSPNLAC065CW	

### Advantages

- Optical lens concentrate lighting along the length of the road
- Uniform lighting ensures lamps to be placed longer pitch
- Designed for Indian climatic conditions ensuring less than 15°C temperature raise on the body. Hence, no light depreciation over the period of time
- LED's operated with in manufacturers rated current ensuring longer life
- Immune to electrical line fluctuations and surges.
- Protects battery from overcharging and deep discharge
- Low power consumption & dusk to dawn control of light
- Ingress Protection (IP-65)

\* The specifications are subjected to change. Before finalizing the product, please contact us.

India's  
Best Energy Efficient  
LED Lights

UNCONDITIONAL WARRANTY  
**5** Years  
LUMEN GUARANTEE



Bed Lamp 0.5W (1LED)



Night Lamp 0.6W (4LED)



Utility Lamp 1.5W (12LED)



### Specifications:

Model	Bed Lamp 0.5W (1LED)	Night Lamp 0.6W (4LED)	Utility Lamp 1.5W (12LED)
Operating Voltage	150V - 275V AC	150V - 275V AC	150V - 275V AC
Electrical Power	0.5W	0.6W	1.5W
Viewing Angle	105°	105°	105°
Lumen Output	8 Lumens	32 Lumens	100 Lumens
Efficacy	20 Lumens / Watt	50 Lumens / Watt	62.5 Lumens / Watt
Color Temperature	Cool White (6000K-7000K) Warm White (2700K-3300K)	Cool White (6000K-7000K) Warm White (2700K-3300K)	Cool White (6000K-7000K) Warm White (2700K-3300K)
Operating Temperature	0 to 60°C	0 to 60°C	0 to 60°C
Adapter / Holder	B22D	B22D	B22D
Product Code	IUHSSAC0P5CW	IUHMSAC0P6CW	IUHMSAC1P5CW

\* The specifications are subjected to change. Before finalizing the product, please contact us.

#### Vijayawada:

M.G. Road, Vijayawada - 520 010, A. P., INDIA  
+91 866 2483375, 2493376, sales@effe.in, www.effe.in

#### Hyderabad:

Lumbini Jewel Mall, Road No.2, Banjara Hills,  
Hyderabad - 500 034, +91 70366 64667

Manufactured by

**efftronics**<sup>®</sup>  
visit: www.efftronics.com